

CXCL16 participates in pathogenesis of immunological liver injury by regulating T lymphocyte infiltration in liver tissue

Huan-Bin Xu, Yan-Ping Gong, Jin Cheng, Yi-Wei Chu, Si-Dong Xiong

Huan-Bin Xu, Yan-Ping Gong, Jin Cheng, Yi-Wei Chu, Si-Dong Xiong, Department of Immunology and Key Laboratory of Molecular Medicine of Ministry of Education, Shanghai Medical College of Fudan University; Immunology Division, E-Institute of Shanghai Universities, Shanghai 200032, China

Supported by the National Natural Science Foundation of China, No. 30230320, National Science Fund for Distinguished Young Scholars from NSFC, No. 39925031, National High Technology Research and Development Program of China, 863 grant 2004 AA215242, Major State Basic Research Development Program of China, No. 2001CB510005 and partially by E-Institute of Shanghai Universities

Correspondence to: Dr. Si-Dong Xiong, Department of Immunology, Shanghai Medical College of Fudan University, 138 Yixueyuan Road, Shanghai 200032, China. sdxiong@shmu.edu.cn

Telephone: +86-21-54237749 Fax: +86-21-54237749

Received: 2004-10-21 Accepted: 2004-12-26

Abstract

AIM: To investigate the role of CXCL16 in the pathogenesis of immunological liver injury and to explore the possible mechanism of T lymphocyte infiltration regulated by CXCL16.

METHODS: Immunological liver injury in murine model was induced by Bacille Calmette-Guerin and lipopolysaccharide. Expression pattern and distribution of CXCL16 were examined by real-time quantitative RT-PCR and immunohistochemical analysis. Anti-CXCL16 antibody was administered *in vivo* to investigate its effect on T-cell recruitment and acute hepatic necrosis. The survival of murine model was also evaluated.

RESULTS: The murine immunological liver injury model was successfully established. CXCL16 expression increased and predominantly distributed in periportal areas and vascular endothelia in injured liver tissues. Administration of anti-CXCL16 Ab protected the mice from death and acute liver damage. Approximately 70% of the mice survived for 72 h in the anti-CXCL16 Ab treatment group, whereas 80% died within 72 h in control Ab group. The number of liver-infiltrating T lymphocytes was significantly reduced from 1.01×10^7 to 3.52×10^6 /liver, compared with control Ab treatment.

CONCLUSION: CXCL16 is involved in immunological liver injury by regulating T lymphocyte infiltration in liver tissue.

© 2005 The WJG Press and Elsevier Inc. All rights reserved.

Key words: Chemokines; CXCL16; T lymphocytes; Infiltration; Immunological liver injury

Xu HB, Gong YP, Cheng J, Chu YW, Xiong SD. CXCL16 participates in pathogenesis of immunological liver injury by regulating T lymphocyte infiltration in liver tissue. *World J Gastroenterol* 2005; 11(32): 4979-4985

<http://www.wjgnet.com/1007-9327/11/4979.asp>

INTRODUCTION

Immunological liver injury is a key pathological change in liver disease, with a high mortality rate and histopathologically characterized by diffuse intrahepatic infiltration of inflammatory cells with massive multilobular necrosis. The details of the mechanisms involved in immunological liver injury remain to be elucidated. It was reported that injection of a small dose of lipopolysaccharide (LPS) into mice primed with Bacille Calmette-Guerin (BCG) causes lethal acute hepatic necrosis^[1], mimicking fulminant hepatic failure. There is evidence that activated macrophages and T lymphocytes are essential for the induction of liver damage^[2-3].

The current paradigm of T lymphocytes recruited to the inflamed liver is a multiple-step model, which describes the sequence of tethering/rolling, firm adhesion, and diapedesis/extravasation^[6,7]. The chemokine family is a small secreted protein, that directs migration of various types of leukocytes and is involved in inflammatory and immunological processes including lymphocyte homing, angiogenesis and enhancement of cytotoxic T lymphocyte (CTL) responses^[8,9]. Chemokines have been classified into four subfamilies, C, CC, CXC and CX₃C, based on the motif formed by the conserved cysteine residues in the N-terminal region. The selective interaction of chemokines and their receptors in part contributes to the specificity by which leukocyte subsets might be preferentially determined^[10,11].

CXCL16, with its structure similar to that of FKN^[12], containing both membrane-anchored and soluble forms, is a ligand for CXC chemokine receptor 6 (CXCR6), which is expressed on natural killer T (NKT) cells, and type 1-polarized, activated CD4⁺ and CD8⁺ T cells. CXCL16 is markedly expressed in lung, small intestine and kidney, and weakly expressed in liver^[13-18]. Because the pathological characteristics of immunological liver injury are associated with T-lymphocyte infiltration, and CXCL16 is chemotactic for T-lymphocyte migration to the liver tissue damage^[4,5,19-21], we could reason that CXCL16 might play a crucial role in the pathogenesis of immunological liver injury. In the present study, we investigated the expression pattern and distribution of CXCL16, and studied the role of CXCL16 in liver T-cell infiltration, and the effect of anti-CXCL16 antibody on the pathogenesis of immunological liver injury.

MATERIALS AND METHODS

Mice

Specific pathogen-free BALB/c mice (6-7 wk old) obtained from Shanghai Animal Center of Chinese Academy of Sciences (Shanghai, China) were bred in pathogen-free conditions and allowed free access to food and water.

Reagents

LPS (*Escherichia coli* 055:B5) was purchased from Sigma (St. Louis, MO). BCG was from Institute of Biological Product (Shanghai, China). Rat immunoglobulin (goat IgG) was gifted by Dr. XL Wang. Rat anti-mouse CXCL16 mAb (clone 142417, rat IgG2a) was obtained from R&D systems. PE-labeled anti-CD4 mAb and FITC-conjugated anti-CD8 mAb were obtained from PharMingen (San Diego, CA, USA). TRIzol RNA extraction kit was purchased from Gibco. All other chemicals used were of analytical grade.

Induction of liver injury by BCG and LPS

BCG was suspended in pyrogen-free physiological saline. To induce liver injury, mice were primed with intravenous injection of BCG (5×10^7 viable bacilli) via tail veins. After 12 d, they were given an intravenous injection of LPS (7.5 $\mu\text{g}/\text{mouse}$) suspended in pyrogen-free phosphate-buffered saline (PBS). To examine the effect of anti-CXCL16 antibodies on BCG-LPS-induced liver injury, monoclonal anti-CXCL16 antibody (0.2 mg/mouse) or nonimmune rat isotype IgG (0.2 mg/mouse) was administered intravenously 1-2 h before LPS challenge. Mice were killed to collect sera and liver specimens, and stored at -70°C until use. Survival rate was determined 72 h after the LPS challenge.

Determination of serum alanine transferase (ALT)

Serum was collected for the measurement of ALT levels at various time points after LPS challenge.

Histology

Liver specimens were fixed in 10% neutrally buffered formalin and embedded in paraffin. Deparaffinized thin sections from each paraffin block were stained with hematoxylin and eosin for histologic examination and analyzed by light microscopy.

Analysis of specific gene expression in liver tissue by real-time quantitative RT-PCR

Total RNA was isolated from liver specimens using TRIzol, according to the manufacturer's instructions. The specific mRNA level was quantified by real-time quantitative PCR using a LightCycler instrument (Roche Molecular Biochemicals, Germany) with the DNA binding dye SYBR Green I as described with minor modifications^[22]. The sense primer for CXCL16 was 5'-AAC CAG GGC AGT GTC GC-3', and the antisense primer was 5'-AGG CAA ATG TTT TTG GTG G-3' (position: 79-342). The sense primer for β -actin was 5'-GCT ACA GCT TCA CCA CCA CAG-3', and the antisense primer was 5'-GGT CTT TAC GGA TGT CAA CGT C-3' (position: 590-877). Expression of mRNA was normalized by β -actin. In brief, external standards were

plasmids containing CXCL16 gene fragment (and β -actin). Plasmid DNA was purified and quantified photometrically and serially diluted. One microgram total RNA was reverse transcribed to cDNA. One microliter cDNA or external standard was added to capillary to a final reaction volume of 20 μL . The primer final concentration was adjusted to 0.5 $\mu\text{mol}/\text{L}$. The amplification conditions were initial denaturation at 95°C for 30 s, 45 cycles at 95°C for 0 s, at 60°C for 3 s, at 72°C for 12 s. Melting curve analysis was performed at the end of amplification. The acquisition temperature for the fluorescence signal was adjusted to 84°C . PCR products were electrophoresed on 2% agarose gels and photos were taken under ultraviolet light to identify their specificity and sensitivity.

Immunohistochemistry

Experiments were conducted on frozen sections as described in detail elsewhere^[23]. Sections were incubated with primary antibody, and then with HRP-conjugated anti-rat IgG antibodies. After being visualized using DAB containing 0.01% hydrogen peroxide and counterstained with hematoxylin, sections were microscopically examined. Control sections were treated with omission of the primary antibody.

Preparation of intrahepatic infiltrating leukocytes and FACS analysis

Liver-infiltrating leukocytes were prepared as previously described^[24]. In brief, livers were taken from mice, pressed through the nylon mesh, and suspended in 2% fetal calf serum (FCS). The cell suspension was treated with Percoll density (1.09) gradient centrifugation. Mononuclear cells (MNCs) were isolated from parenchymal hepatocytes by centrifugation at 2 500 r/min for 30 min. The pellet was washed thrice in DMEM and resuspended in 10% FCS-DMEM. Flow cytometric immunofluorescence analysis of liver-infiltrating cells was performed with FACS calibur (BD Corp.). In brief, 4×10^5 cells were incubated with a PE-labeled anti-CD4 Ab and FITC-conjugated anti-CD8 Ab or FITC-conjugated anti-CD3 Ab at 4°C for 30 min after washing twice with PBS solution.

Statistical analysis

All statistical calculations were performed using GraphPad PRISMTM (Graphpad Software Inc.). The survival rates were analyzed using the log-rank test. Student's *t* test was used to test for significance. $P < 0.05$ was considered statistically significant.

RESULTS

Establishment of immunological liver injury model in mice

BCG treatment alone induced MNC infiltration into hepatic lobes and formed granuloma (Figure 1B). Subsequent LPS challenge in BCG-primed mice induced diffuse infiltration of MNCs and multilobular hepatocellular necrosis in liver tissue (Figure 1C). The ALT level dramatically increased in BCG-primed mice after LPS challenge (Figure 2) compared to BCG treatment alone ($P < 0.05$). All these data confirmed that the murine immunological liver injury model was successfully conducted.

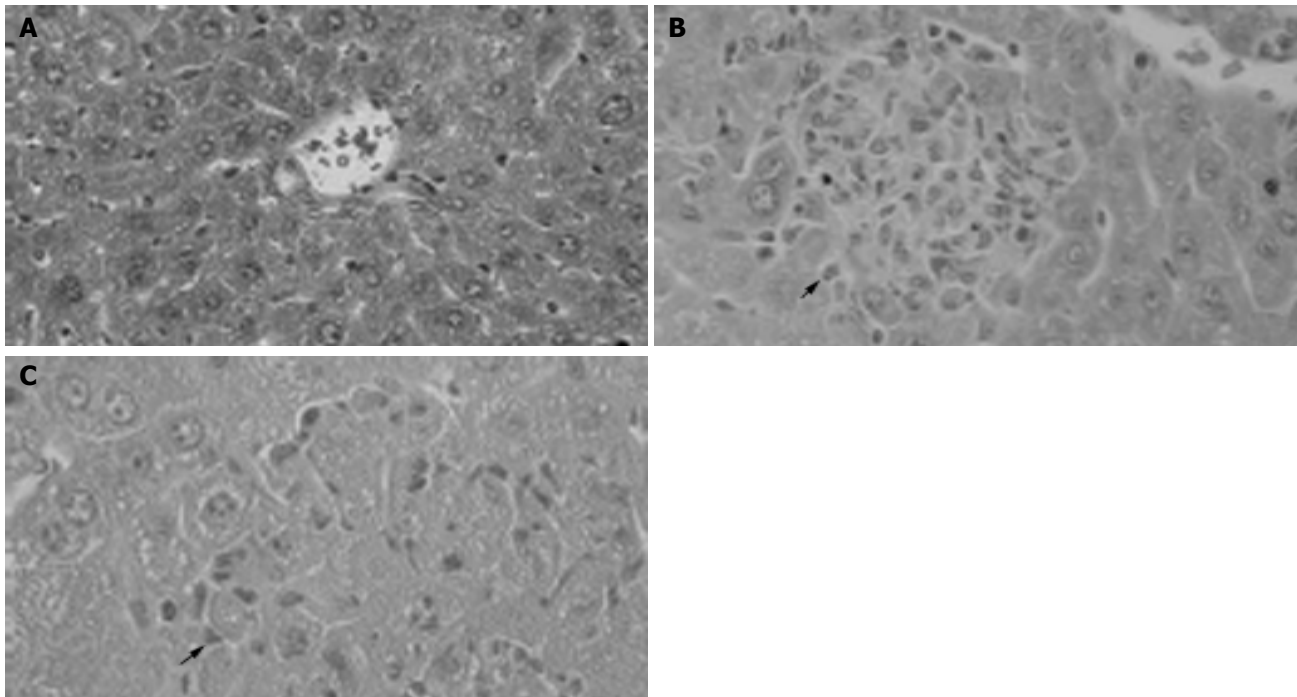


Figure 1 Pathological examination showing granuloma formation with BCG administration and hepatocellular necrosis followed by LPS injection. H&E staining

of cross-sections of normal liver (A), 12 d after BCG injection (B) and BCG-primed mice sequentially challenged with LPS (C). Bars = 20 μ m.

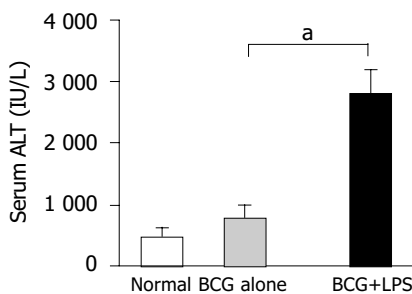


Figure 2 Levels of serum ALT in mice. The serum ALT levels of mice ($n = 5$ at each group) were measured as described in Materials and methods. Data represent mean \pm SD. ^a $P < 0.05$ vs BCG-primed mice.

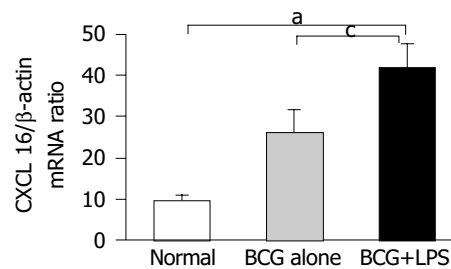


Figure 3 Detection of CXCL16 mRNA in the injured liver by real-time quantitative RT-PCR analysis. Total RNA was isolated from the liver tissues at the different group as indicated and then reverse transcribed with reverse transcriptase and amplified by real-time quantitative PCR specific for CXCL16. Amplification of β -actin by same approach was used as control. The results represent three independent experiments. ^a $P < 0.05$ vs normal mice, ^c $P < 0.05$ vs BCG-primed mice.

Expression pattern and distribution of CXCL16 in murine injured liver model

Total RNA were isolated from liver tissue of normal, BCG-treated and BCG-primed mice after LPS challenge. CXCL16 mRNA was quantified by real-time quantitative PCR. CXCL16 was expressed in BCG-primed mice and strongly upregulated after LPS challenge, compared to that in normal liver tissue (Figure 3). These results suggested that upregulation of CXCL16 expression might be associated with liver injury.

Immunohistochemical analysis further showed that expression of CXCL16 in the liver significantly increased after LPS challenge in BCG-primed mice, compared to that in normal mice (Figure 4). CXCL16 was predominantly distributed in periportal area, hepatic sinusoids and vascular endothelia (Figure 4).

Infiltration of T lymphocytes in injured liver tissue

To investigate the characteristics of circulating T lymphocyte recruitment and infiltration in immunological liver injury,

cell surface expressions of CD3, CD4 and CD8 in the infiltrated MNCs were analyzed using a flow cytometer. The results revealed that the CD4+ T lymphocyte population increased from 0.92% to 2.93%, and further increased to 11.2% in BCG-primed mice after LPS challenge. CD8+ T lymphocyte population also increased from 0.16% to 1.56%, and reached 2.35% after LPS challenge (Figure 5A). The total absolute number of T lymphocytes increased from 0.399×10^6 to 3.179×10^6 /liver and reached 1.01×10^7 /liver in BCG-primed mice injected with LPS (Figure 5B). These findings demonstrated that T lymphocytes might be involved in the pathogenesis of immunological liver injury.

Anti-CXCL16 antibody increased survival of mice with immunological liver injury

Neutralizing anti-CXCL16 antibody could protect mice

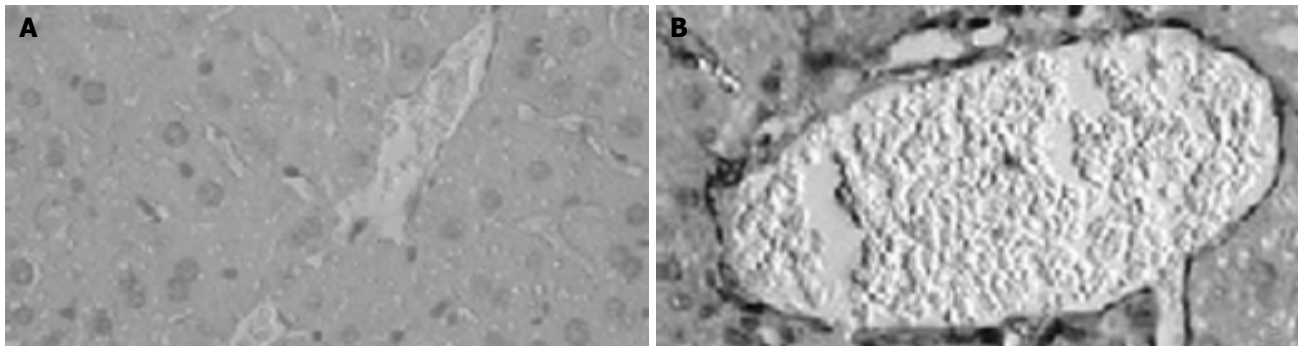


Figure 4 Immunohistochemical examination of CXCL16 expression in liver tissue. Sections of livers were obtained from normal mice without any treatment (A) and BCG-primed mice sequentially injected with LPS (B). CXCL16-positive

(brown) cells are shown in the liver tissue with hematoxylin counterstaining. Bars = 20 μm.

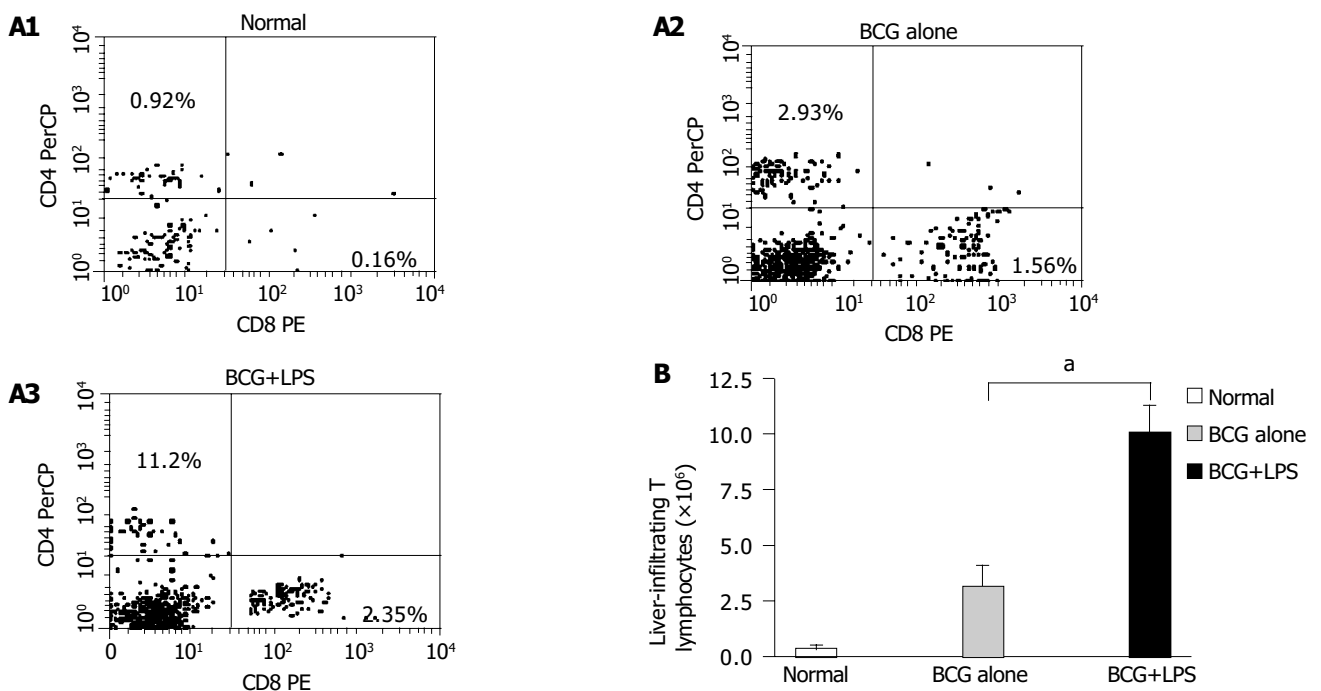


Figure 5 Analysis of liver-infiltrating CD4+ and CD8+ T lymphocytes population in liver injury induced by BCG and LPS. Mice were primed with BCG and sequentially challenged by LPS, 12 d after priming. MNCs derived from normal (without any treatment, open bars); BCG-primed (horizontal bars) and BCG-primed plus LPS challenged mice (hatched bars) were harvested for FACS

analysis. A₁-A₃: The CD4+ and CD8+ T lymphocytes population were analyzed with FACS; B: the absolute number of T lymphocytes was determined by multiplying the total MNC number by the fraction of CD4+, CD8+ T-lymphocytes population. ^aP<0.05 vs BCG-primed mice.

against lethal liver failure induced by BCG and LPS. Approximately 70% of the mice (n = 10) survived for 72 h, whereas most (80%) of the mice treated with control Ab died within 72 h (Figure 6).

Anti-CXCL16 antibody reduced infiltration of T lymphocytes in liver injury

Infiltrated MNCs in the liver were observed and granuloma formed after BCG treatment. The diffuse infiltration of MNCs resulted in multilobular necrosis after LPS challenge. To investigate the effects of anti-CXCL16 antibody on intrahepatic infiltrating T lymphocytes, liver MNCs were isolated and T lymphocytes were analyzed. The results revealed that anti-CXCL16 antibody *in vivo* significantly decreased the number of T-infiltrating lymphocytes from

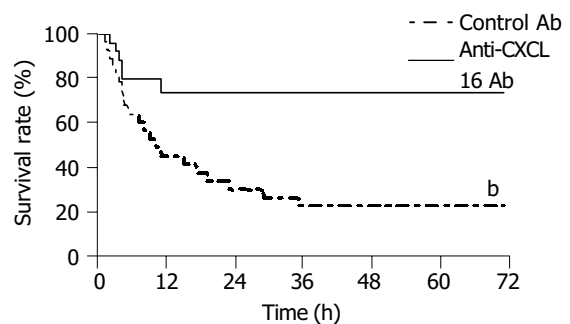


Figure 6 Protective effect of anti-CXCL16 antibody on survival rate for murine lethal hepatic failure. Immunological liver injury was induced by BCG and LPS treatment and anti-CXCL16 Ab (solid line, n = 10) or control Ab (dashed line, n = 10) was injected as indicated in Materials and methods. The anti-CXCL16 antibody significantly protected the mice from lethality (^bP<0.01 vs control Ab).

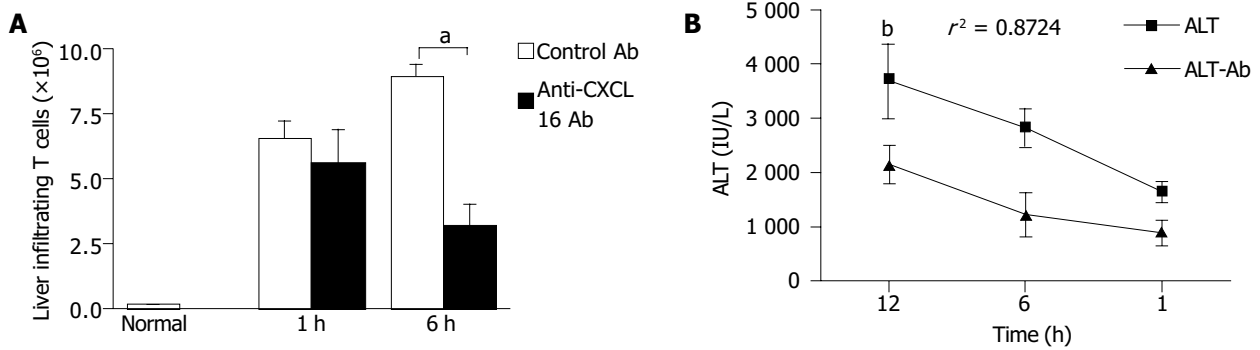


Figure 7 Effects of anti-CXCL16 antibody on intrahepatic infiltration of T lymphocytes and serum ALT level in the mice. Mice were primed with BCG and sequentially challenged by LPS 12 d after priming. Anti-CXCL16 antibody and isotype antibody were administrated into the mice, respectively. **A:** T lymphocytes derived from the mice treated with either anti-CXCL16 antibody (closed bars) or isotype antibody (hatched bars) was harvested for FACS

analysis. The absolute number of T lymphocytes was determined by multiplying the total MNC number by the fraction of CD3⁺T lymphocytes population. ^a $P < 0.05$ vs control Ab treatment. **B:** Anti-CXCL16 antibody significantly suppressed the elevation of serum ALT. ^b $P < 0.01$ vs control Ab group. Results were obtained from three independent experiments.

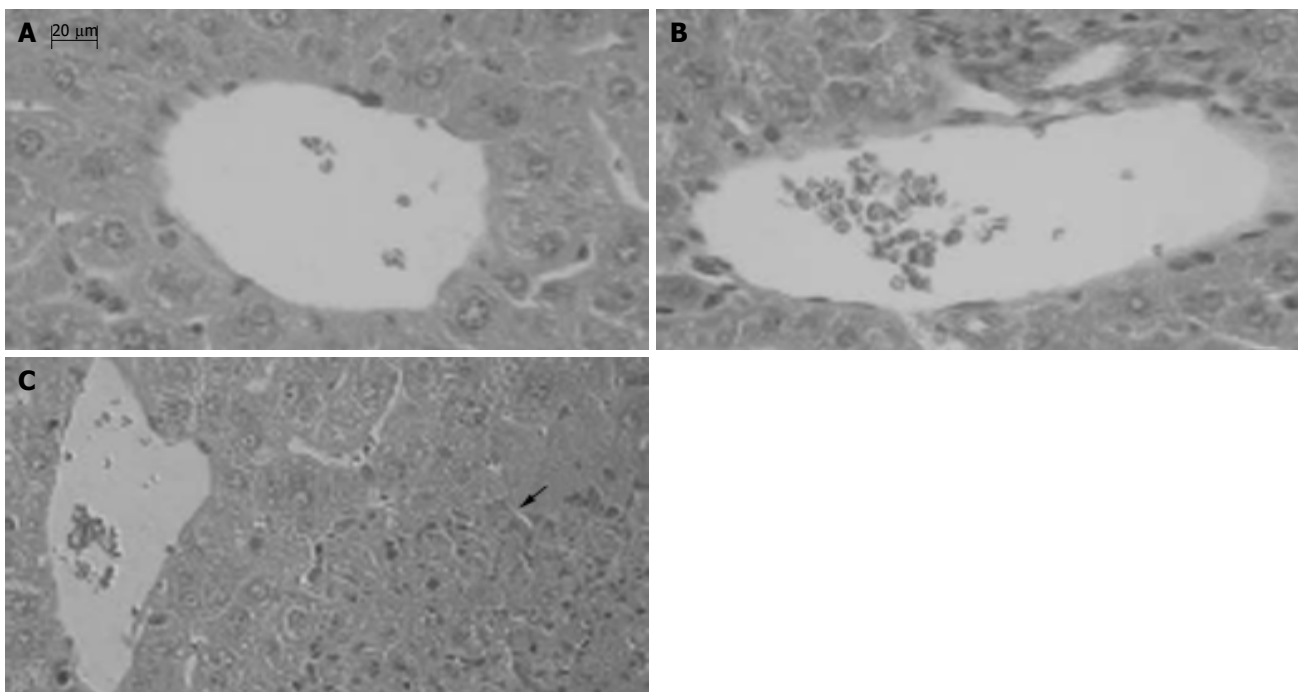


Figure 8 Effect of anti-CXCL16 antibody on the formation of hepatic lesion in liver injury induced by BCG and LPS. Sections of livers were obtained as follows: **A:** The liver tissue without any treatment; **B:** The liver tissue of mice primed with BCG was treated with the anti-CXCL16 Ab followed by LPS

challenge; **C:** The liver tissue of mice primed with BCG was treated with nonimmune rat IgG followed by LPS challenge. An arrow shows a necrotic lesion. Tissues were stained with H&E and examined histologically. Bars = 20 μ m.

1.01×10^7 to 3.52×10^6 /liver in BCG-primed mice after LPS challenge (Figure 7A, $P < 0.05$).

Change in serum ALT levels was characteristic of the immunological liver injury model in mice. The serum ALT level significantly decreased, when anti-CXCL16 antibody was applied *in vivo* compared to that after treatment with control Ab. The correlation coefficient of specific Ab and control Ab was 0.8724 ($P < 0.01$, Figure 7B). These data indicated that T cells might play a key role in the BCG and LPS-induced immunological liver injury.

Anti-CXCL16 antibody protected mice against multilobular necrosis in liver injury

MNCs infiltrated into liver lobes and formed granuloma in

liver 12 d after BCG treatment, compared to the normal mice (Figure 8A). Massive necrosis with diffuse infiltration of MNCs was observed in the livers of BCG-primed mice after LPS challenge (Figure 8C). In contrast, liver necrosis was significantly reduced by anti-CXCL16 Ab administration, and the specific Ab blocked the infiltration of MNCs infiltration in liver lobes and portal areas (Figure 8B).

DISCUSSION

In the present study, accumulation of T lymphocytes and massive hepatic necrosis were found and CXCL16 was strongly upregulated in the injured liver tissue in murine model. Upregulation of CXCL16 might be associated with

necrosis and liver injury. Administration of anti-CXCL16 antibody markedly inhibited the intrahepatic infiltration of T lymphocytes, and prevented lethal hepatic failure. These findings demonstrate that CXCL16 may play an important role in T lymphocyte infiltration and hepatic necrosis in immunological liver injury.

Serum ALT level is an important characteristic of hepatitis accompanied with pathologic changes of liver. Our results demonstrate that intravenous administration of anti-CXCL16 Ab can significantly decrease serum ALT level and hepatic necrosis, suggesting that CXCL16 plays a role in liver injury through some mechanisms. CXCL16 is predominantly expressed on APCs, existing in both secretory and transmembrane forms, and selectively chemoattracts CXCR6+T lymphocytes, which are potential cytotoxic effector cells, such as CD4+Th1, activated CD8+T cells and NKT cells^[13,14]. It was reported that these effector cells are closely associated with massive liver injury^[25-28]. These effector T lymphocytes, perhaps accompanying other leukocytes, might be recruited and involved in the pathogenesis of acute liver injury.

Activated CD4+T, CD8+T and NKT cells express TNF- α and FasL molecules associated with liver injury^[3,15,21,29-31]. Therefore, infiltrated T lymphocytes may mediate cytotoxicity to Fas-expressing hepatocytes and cause liver damage. Injection of LPS activates lymphocytes and triggers the release various soluble factors such as TNF- α , IFN- γ and IL-1, resulting in hepatocyte apoptosis and severe liver injury^[2,31,32]. All these and sequential cytokine production are the key factors in the pathogenesis of acute hepatic failure. Anti-CXCL16 antibody can decrease the number of intrahepatic infiltrating T lymphocytes, especially CD4+ and CD8+T-lymphocyte population. These might explain in part the reason, why specific antibody can rescue mice from death. Some leukocytes, such as neutrophils, are involved in liver injury. However, available evidence suggests that a small dose of LPS, that does not cause overt organ injury, can effectively inhibit extravascular recruitment of neutrophils^[33,34].

It is well known that many chemokines contribute to chemoattraction to trafficking leukocytes during liver inflammation^[8,35,36]. However, anti-CXCL16 antibody could significantly reduce the number of intrahepatic T lymphocytes and liver necrosis, indicating that CXCL16 might play other roles besides chemotactic function. There is evidence that supports these functions^[17,37]. Our experiments have confirmed that macrophages infected with *Mycobacterium tuberculosis* significantly increase the expression of CXCL16 and release chemokines and cytokines (data not shown). CXCL16 function in macrophages needs to be further studied.

Anti-CXCL16 Ab could not completely protect mice against death, suggesting that other chemokines or cytokines can also induce liver injury. Recently, it was reported that chemokines such as migration inhibitory factor, macrophage inflammatory protein-2 and thymus and activation-regulated chemokine are involved in the pathogenesis of liver injury^[1,38,39]. Although these facts can explain in part the possible reason why anti-CXCL16 Ab can protect mice from death, the precise mechanism needs to be elucidated further.

REFERENCES

- 1 Kobayashi S, Nishihira J, Watanabe S, Todo S. Prevention of lethal acute hepatic failure by antimacrophage migration inhibitory factor antibody in mice treated with bacille calmette-guerin and lipopolysaccharide. *Hepatology* 1999; **29**: 1752-1759
- 2 Nagakawa J, Hishinuma I, Hirota K, Miyamoto K, Yamanaka T, Tsukidate K, Katayama K, Yamatsu I. Involvement of tumor necrosis factor-alpha in the pathogenesis of activated macrophage-mediated hepatitis in mice. *Gastroenterology* 1990; **99**: 758-765
- 3 Tsutsui H, Matsui K, Kawada N, Hyodo Y, Hayashi N, Okamura H, Higashino K, Nakanishi K. IL-18 accounts for both TNF-alpha and Fas ligand-mediated hepatotoxic pathways in endotoxin-induced liver injury in mice. *J Immunol* 1997; **159**: 3961-3967
- 4 Matsui K, Yoshimoto T, Tsutsui H, Hyodo Y, Hayashi N, Hiroishi K, Kawada N, Okamura H, Nakanishi K, Higashino K. *Propionibacterium acnes* treatment diminishes CD4+NK1.1+T cells but induces type I T cells in the liver by induction of IL-12 and IL-18 production from Kupffer cells. *J Immunol* 1997; **159**: 97-106
- 5 Yajima T, Nishimura H, Saito K, Kuwano H, Yoshikai Y. Overexpression of interleukin-15 increases susceptibility to lipopolysaccharide-induced liver injury in mice primed with *Mycobacterium bovis* bacillus calmette-guerin. *Infect Immun* 2004; **72**: 3855-3862
- 6 Rossi D, Zlotnik A. The biology of chemokines and their receptors. *Annu Rev Immunol* 2000; **18**: 217-242
- 7 Luster AD. Chemokines-chemotactic cytokines that mediate inflammation. *N Engl J Med* 1998; **338**: 436-445
- 8 Baggiolini M. Chemokines and leukocyte traffic. *Nature* 1998; **392**: 565-568
- 9 Wards SG, Bacon K, Westwick J. Chemokines and T lymphocytes: more than an attraction. *Immunity* 1998; **9**: 1-11
- 10 Campbell JJ, Butcher EC. Chemokines in tissue-specific and microenvironment-specific lymphocyte homing. *Curr Opin Immunol* 2000; **12**: 336-341
- 11 Cunn MD, Ngo VN, Ansel KM, Ekland EH, Cyster JG, Williams LT. A B-cell-homing chemokine made in lymphoid follicles activates Burkitt's lymphoma receptor-1. *Nature* 1998; **391**: 799-803
- 12 Bazan JF, Bacon KB, Hardiman G, Wang W, Soo K, Rossi D, Greaves DR, Zlotnik A, Schall TJ. A new class of chemokine with a CX3C motif. *Nature* 1997; **385**: 640-644
- 13 Matloubian M, David A, Engel S, Ryan JE, Cyster JG. A transmembrane CXC chemokine is a ligand for HIV-coreceptor Bonzo. *Nat Immunol* 2000; **1**: 298-304
- 14 Wilbanks A, Zondlo SC, Murphy K, Mak S, Soler D, Langdon P, Andrew DP, Wu L, Briskin M. Expression cloning of the STRL33/BONZO/TYMSTRligand reveals elements of CC, CXC, and CX3C chemokines. *J Immunol* 2001; **166**: 5145-5154
- 15 Johnston B, Kim CH, Soler D, Emoto M, Butcher EC. Differential chemokine responses and homing patterns of murine TCR alpha beta NKT cell subsets. *J Immunol* 2003; **171**: 2960-2969
- 16 Nakayama T, Hieshima K, Izawa D, Tatsumi Y, Kanamaru A, Yoshie O. Cutting edge: profile of chemokine receptor expression on human plasma cells accounts for their efficient recruitment to target tissues. *J Immunol* 2003; **170**: 1136-1140
- 17 Shimaoka T, Nakayama T, Fukumoto N, Kume N, Takahashi S, Yamaguchi J, Minami M, Hayashida K, Kita T, Ohsumi J, Yoshie O, Yonehara S. Cell surface-anchored SR-PSOX/CXC chemokine ligand 16 mediates firm adhesion of CXC chemokine receptor 6-expressing cells. *J Leukoc Biol* 2004; **75**: 267-274
- 18 Yamauchi R, Tanaka M, Kume N, Minami M, Kawamoto T, Togi K, Shimaoka T, Takahashi S, Yamaguchi J, Nishina T, Kitaichi M, Komeda M, Manabe T, Yonehara S, Kita T. Upregulation of SR-PSOX/CXCL16 and recruitment of CD8+T cells in cardiac valves during inflammatory valvular heart disease. *Arterioscler Thromb Vasc Biol* 2004; **24**: 282-287
- 19 Tsuji H, Harada A, Mukaida N, Nakanuma Y, Bluethmann H, Kaneko S, Yamakawa K, Nakamura SI, Kobayashi KI, Matsushima K. Tumor necrosis factor receptor p55 is essential for intrahepatic granuloma formation and hepatocellular apoptosis in a murine model of bacterium-induced fulmi-

- nant hepatitis. *Infection Immun* 1997; **65**: 1892-1898
- 20 **Heydtmann M**, Adams DH. Understanding selective trafficking of lymphocyte subsets. *Gut* 2002; **50**: 150-152
- 21 **Kim CH**, Kunkel EJ, Boisvert J, Johnston B, Campbell JJ, Genovese MC, Greenberg HB, Butcher EC. Bonzo/CXCR6 expression defines type 1-polarized T-cell subsets with extralymphoid tissue homing potential. *J Clin Invest* 2001; **107**: 595-601
- 22 **Dumoulin FL**, Nischalke HD, Leifeld L, von dem Bussche A, Rochstroh JK, Sauerbruch T, Spengler U. Semi-quantification of human C-C chemokine mRNAs with reverse transcription/real-time PCR using multi-specific standards. *J Immunol Methods* 2000; **241**: 109-119
- 23 **De Clerck LS**, Bridts CH, Mertens AM, Moens MM, Stevens WJ. Use of fluorescent dyes in the determination of adherence of human leucocytes to endothelial cells and the effect of fluorochromes on cellular function. *J Immunol Methods* 1994; **172**: 115-124
- 24 **Watanabe H**, Ohtsuka K, Kimura M, Ikarashi Y, Ohmori K, Kusumi A, Ohteki T, Seki S, Abo T. Details of an isolation method for hepatic lymphocytes in mice. *J Immunol Methods* 1992; **146**: 145-154
- 25 **Tanaka Y**, Takahashi A, Watanabe K, Takayama K, Yahata T, Habu S, Nishimura T. A pivotal role of IL-12 in Th1-dependent mouse liver injury. *Int Immunol* 1996; **8**: 569-576
- 26 **Takahashi M**, Ogasawara K, Takeda K, Hashimoto W, Sakihara H, Kumagai K, Anzai R, Satoh M, Seki S. LPS induces NK1.1+ alpha beta T cells with potent cytotoxicity in the liver of mice via production of IL-12 from Kupffer cells. *J Immunol* 1996; **156**: 2436-2442
- 27 **Ando K**, Moriyama T, Guidotti LG, Wirth S, Schreiber RD, Schlicht HJ, Huang SN, Chisari FV. Mechanisms of class I restricted immunopathology. A transgenic mouse model of fulminant hepatitis. *J Exp Med* 1993; **178**: 1541-1554
- 28 **Nakagawa R**, Nagafune I, Tazunoki Y, Ehara H, Tomura H, Iijima R, Motoki K, Kamishohara M, Seki S. Mechanisms of the antimetastatic effect in the liver and of the hepatocyte injury induced by α -galactosylceramide in mice. *J Immunol* 2001; **166**: 6578-6584
- 29 **Lowin B**, Hahne M, Mattmann C, Tschopp J. Cytolytic T-cell cytotoxicity is mediated through perforin and Fas lytic pathways. *Nature* 1994; **370**: 650-652
- 30 **Ogasawara J**, Watanabe-Fukunaga R, Adachi M, Matsuzawa A, Kasugai T, Kitamura Y, Itoh N, Suda T, Nagata S. Lethal effect of the anti-Fas antibody in mice. *Nature* 1993; **364**: 806-809
- 31 **Fujioka N**, Mukaida N, Harada A, Akiyama M, Kasahara T, Kuno K, Ooi A, Mai M, Matsushima K. Preparation of specific antibodies against murine IL-1ra and the establishment of IL-1ra as an endogenous regulator of bacteria-induced fulminant hepatitis in mice. *J Leukoc Biol* 1995; **58**: 90-98
- 32 **Okamura H**, Tsutsi H, Komatsu T, Yutsudo M, Hakura A, Tanimoto T, Torigoe K, Okura T, Nukada Y, Hattori K. Cloning of a new cytokine that induces IFN-gamma production by T cells. *Nature* 1995; **378**: 88-91
- 33 **Kajdacsy-Balla A**, Doi EM, Lerner MR, Bales WD, Archer LT, Wunder PR, Wilson MF, Brackett DJ. Dose-response effect if *in vivo* administration of endotoxin on polymorphonuclear leukocytes oxidative burst. *Shock* 1996; **5**: 357-361
- 34 **Wagner JG**, Roth RA. Neutrophil migration during endotoxemia. *J Leukoc Biol* 1999; **66**: 10-24
- 35 **Springer TA**. Traffic signals for lymphocyte recirculation and leukocyte emigration, the multistep paradigm. *Cell* 1994; **76**: 301-314
- 36 **Butcher EC**, Picker LJ. Lymphocyte homing and homeostasis. *Science* 1996; **272**: 60-66
- 37 **Shimaoka T**, Nakayama T, Kume N, Takahashi S, Yamaguchi J, Minami M, Hayashida K, Kita T, Ohsumi J, Yoshie O, Yonehara S. Cutting edge: SR-PSOX/CXC chemokine ligand 16 mediates bacterial phagocytosis by APCs through its chemokine domain. *J Immunol* 2003; **171**: 1647-1651
- 38 **Lentsch AB**, Yoshidome H, Cheadle WG, Miller FN, Edwards MJ. Chemokine involvement in hepatic ischemia/reperfusion injury in mice: roles for macrophage inflammatory protein-2 and KC. *Hepatology* 1998; **27**: 1172-1177
- 39 **Yoneyama H**, Harada A, Imai T, Baba M, Yoshie O, Zhang Y, Higashi H, Murai M, Asakura H, Matsushima K. Pivotal role of TARC, a CC chemokine, in bacteria-induced fulminant hepatic failure in mice. *J Clin Invest* 1998; **102**: 1933-1941